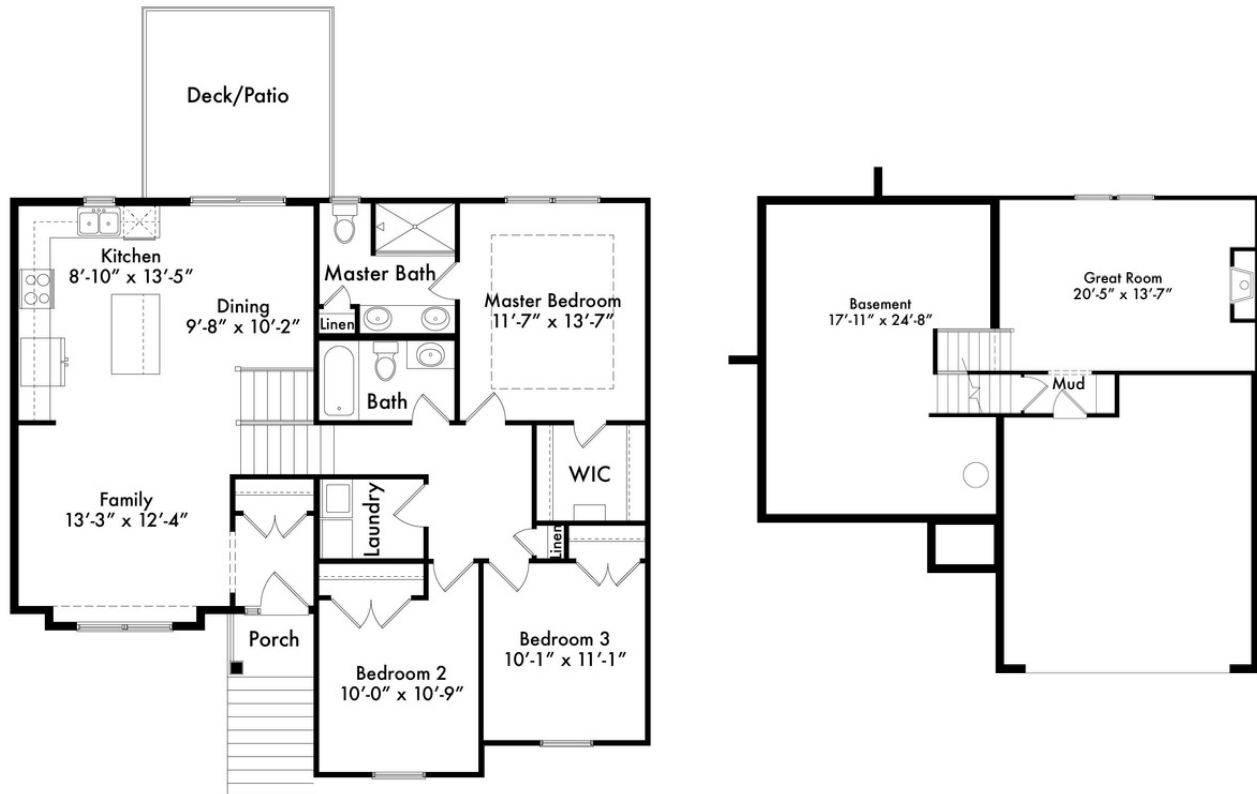




The  
**REBUD  
CRAFTSMAN**

—  
**ATRIUM SPLIT**  
**3 BEDS**  
**2 BATHS**  
**1575 SQFT**



[www.hearthsidekc.com](http://www.hearthsidekc.com)  
[info@hearthside-kc.com](mailto:info@hearthside-kc.com)

Follow The Fun:



**DESIGN CENTER**

1915 Industrial Dr  
 Suite 300, Liberty,  
 MO 64068

**(816) 781-0234**

*Homes may vary slightly from drawings shown.  
 Room dimensions and sqftg is approximate.*

# **REDBUD**

## **PLAN FEATURES**

- Engineered Hardwood at Foyer, Kitchen, Dining, and Family Room
- I-Joist Floor System
- Granite Kitchen Countertops
- Crown Molding in Master Bedroom
- Kitchen Island
- Fireplace With Single Mantle
- Drop Zone
- \$1,500 Lighting Allowance
- \$1,000 Landscape Allowance

# **HEARTHSIDE HOMES**

We understand building a home can be a daunting process. You want to make sure the price point is right, the quality meets your expectations, and the entire process doesn't take forever! With Hearthside Homes, you'll have a team of passionate designers and construction professionals to lead the way. We place an emphasis on including you in on the entire project, by keeping you up-to-date on the complete schedule!

### **A Team Of Experts:**

- Specialty Field Supervisors
- In-House Design Professional
- Dedicated Warranty Manager
- 30+ Years of Experience

### **24/7 Online Access to YOUR:**

- Construction Schedule
- Change Orders
- Contract Documents
- Job Photo Library