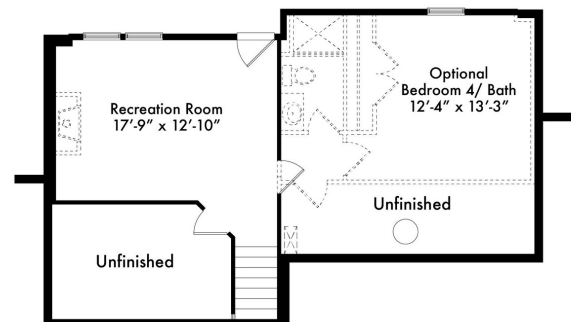
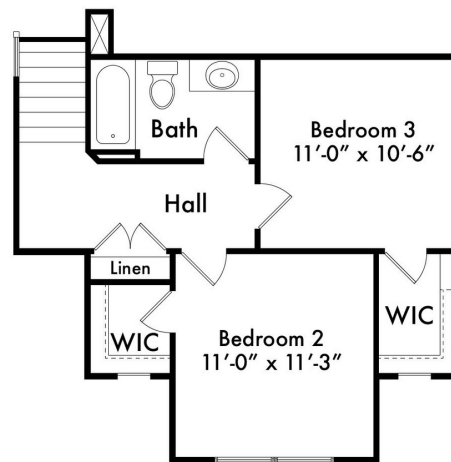
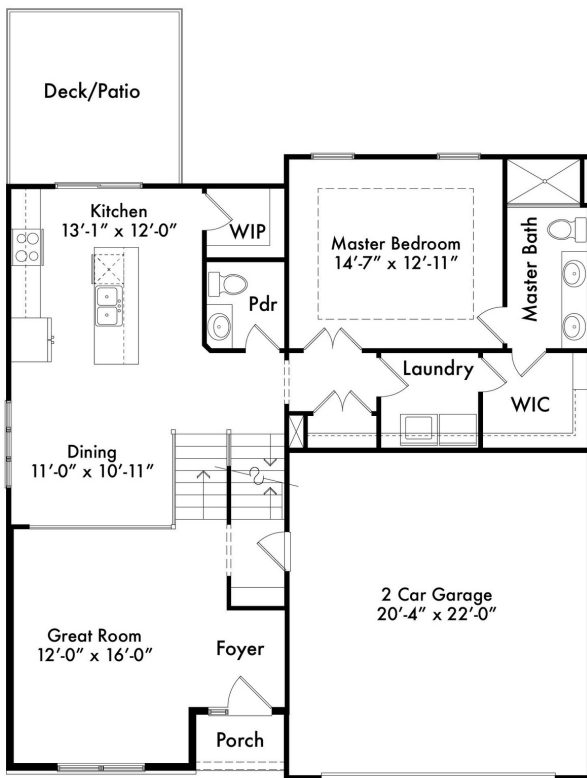




The
**CYPRESS
CRAFTSMAN**

CALIFORNIA SPLIT
3-4 BEDS
2.5 - 3.5 BATHS
1884 - 2155 SQFT



www.hearthsidekc.com
info@hearthside-kc.com

Follow The Fun:



DESIGN CENTER

1915 Industrial Dr
Suite 300, Liberty,
MO 64068

(816) 781-0234

*Homes may vary slightly from drawings shown.
Room dimensions and sqftg is approximate.*

CYPRESS

PLAN FEATURES

- Engineered Hardwood at Foyer, Kitchen, Dining, and Great Room
- I-Joist Floor System
- Crown Molding in Master Bedroom
- Granite Kitchen Countertops
- 8' Garage Door
- Fireplace With Single Mantle
- Walk-In Pantry
- Drop Zone
- \$1,500 Lighting Allowance
- \$1,000 Landscape Allowance

HEARTHSIDE HOMES

We understand building a home can be a daunting process. You want to make sure the price point is right, the quality meets your expectations, and the entire process doesn't take forever! With Hearthside Homes, you'll have a team of passionate designers and construction professionals to lead the way. We place an emphasis on including you in on the entire project, by keeping you up-to-date on the complete schedule!

A Team Of Experts:

- Specialty Field Supervisors
- In-House Design Professional
- Dedicated Warranty Manager
- 30+ Years of Experience

24/7 Online Access to YOUR:

- Construction Schedule
- Change Orders
- Contract Documents
- Job Photo Library