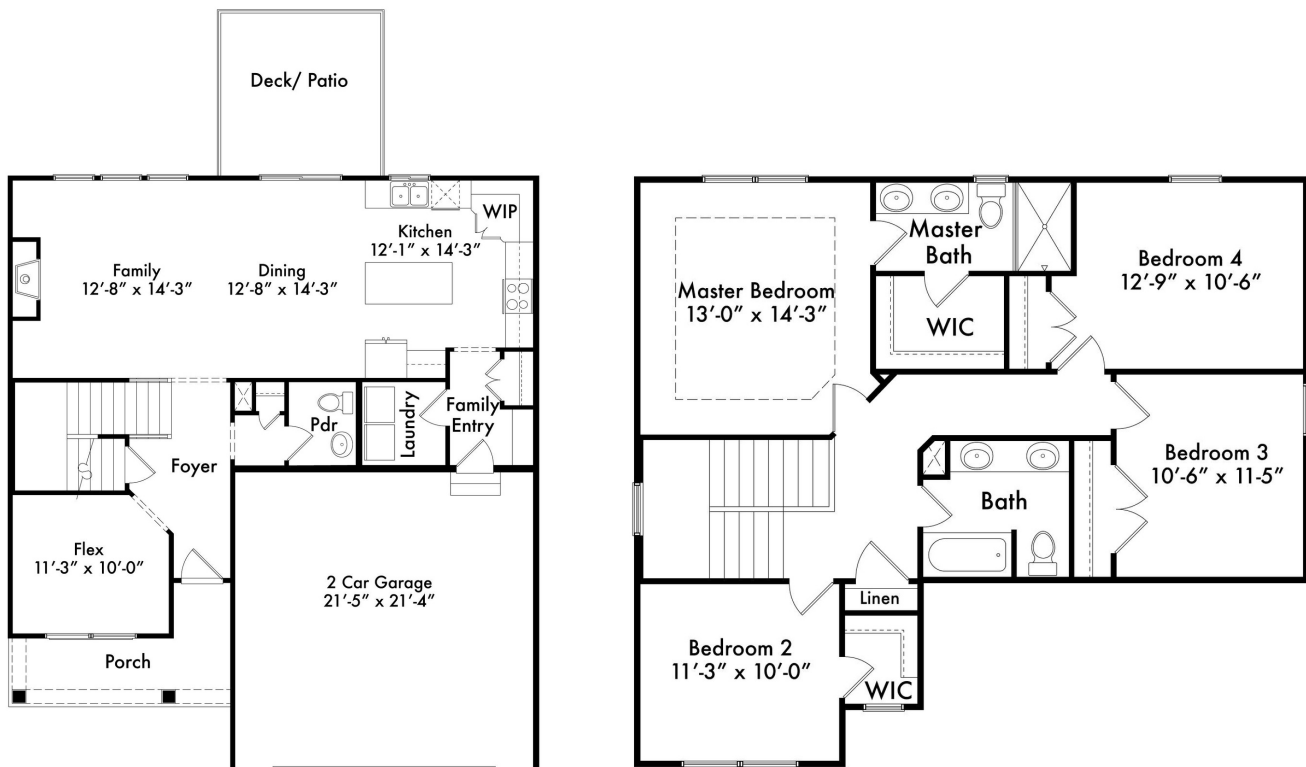




The  
**BROOKLYN  
CRAFTSMAN**

2 STORY  
4 BEDS  
2.5 BATHS  
2010 SQFT



[www.hearthsidekc.com](http://www.hearthsidekc.com)  
[info@hearthside-kc.com](mailto:info@hearthside-kc.com)

Follow The Fun:



**DESIGN CENTER**

1915 Industrial Dr  
Suite 300, Liberty,  
MO 64068

**(816) 781-0234**

*Homes may vary slightly from drawings shown.  
Room dimensions and sqftg is approximate.*

## **BROOKLYN**

### **PLAN FEATURES**

- Engineered Hardwood at Foyer, Powder, Kitchen, Dining, and Family Room
- Granite Kitchen Countertops
- I-Joist Floor System
- Crown Molding in Master Bedroom
- Fireplace with Single Mantle
- Walk-In Pantry
- Drop Zone
- 8' Garage Door
- \$1,500 Lighting Allowance
- \$1,000 Landscape Allowance

## **HEARTHIDE HOMES**

We understand building a home can be a daunting process. You want to make sure the price point is right, the quality meets your expectations, and the entire process doesn't take forever! With Hearthside Homes, you'll have a team of passionate designers and construction professionals to lead the way. We place an emphasis on including you in on the entire project, by keeping you up-to-date on the complete schedule!

### **A Team Of Experts:**

- Specialty Field Supervisors
- In-House Design Professional
- Dedicated Warranty Manager
- 30+ Years of Experience

### **24/7 Online Access to YOUR:**

- Construction Schedule
- Change Orders
- Contract Documents
- Job Photo Library