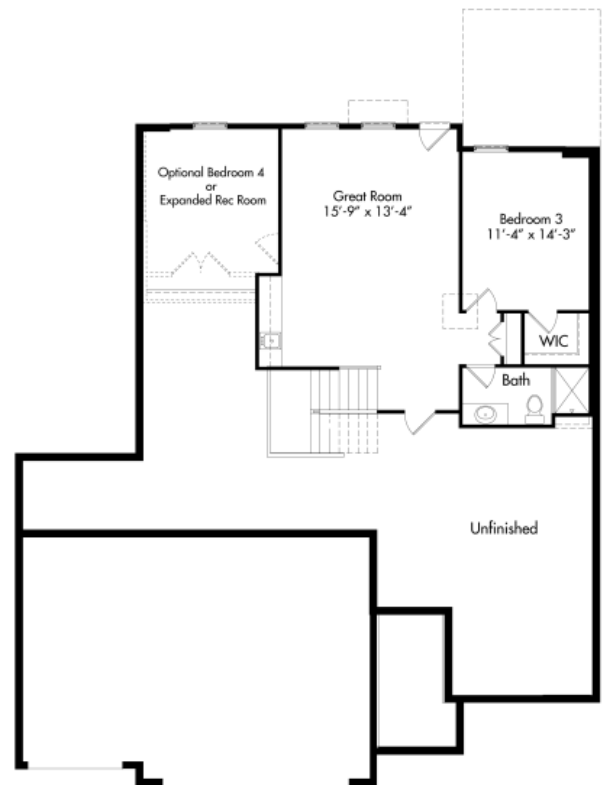
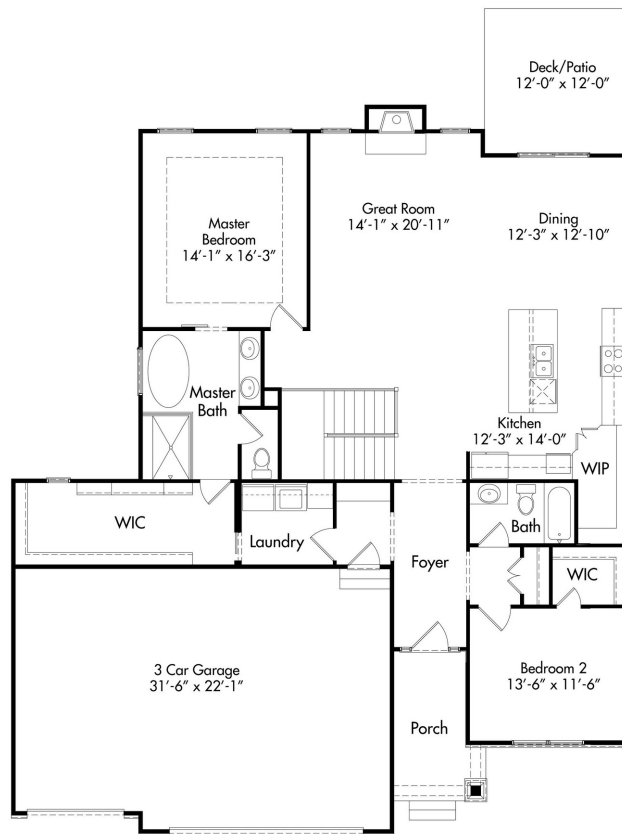




The
**MCKINLEY
PRAIRIE**

REVERSE
3-4 BEDS
3 BATHS
2419 SQFT



www.hearthsidekc.com
info@hearthside-kc.com

Follow The Fun:



DESIGN CENTER

1915 Industrial Dr
Suite 300, Liberty,
MO 64068

(816) 781-0234

*Homes may vary slightly from drawings shown.
Room dimensions and sqftg is approximate.*

MCKINLEY

PLAN FEATURES

- Hardwood In Foyer, Kitchen, Breakfast, Great Room & Garage Entry
- Open Floor Plan
- Fireplace With Double Mantle
- Granite Kitchen Countertops
- Kitchen Island With 3 Pendant Lights
- Furniture Legs At Island
- Range Hood
- 3-Car Garage With 8' Doors
- 2nd Wall Paint Color
- Custom Window Trim In Family Room
- Delta Woodhurst Bath Faucets
- I-Joist Floor System
- Stairs With Designer Carpet & Wood End Caps
- Crown Molding & Wainscoting In Foyer
- Crown Molding In Master Bedroom
- Master Closet Access To Laundry
- Freestanding Master Bathtub
- Frameless Master Shower Glass
- Granite Master Shower Seat
- Tile Wall & Floor In Master Shower
- Tile Floor In All Bathrooms & Laundry Room
- Granite Countertops In All Bathrooms
- Yard Irrigation
- \$2,500 Lighting Allowance
- \$1,750 Landscape Allowance

HEARTHSIDE HOMES

We understand building a home can be a daunting process. You want to make sure the price point is right, the quality meets your expectations, and the entire process doesn't take forever! With Hearthside Homes, you'll have a team of passionate designers and construction professionals to lead the way. We place an emphasis on including you in on the entire project, by keeping you up-to-date on the complete schedule!

A Team Of Experts:

- Specialty Field Supervisors
- In-House Design Professional
- Dedicated Warranty Manager
- 30+ Years of Experience

24/7 Online Access to YOUR:

- Construction Schedule
- Change Orders
- Contract Documents
- Job Photo Library