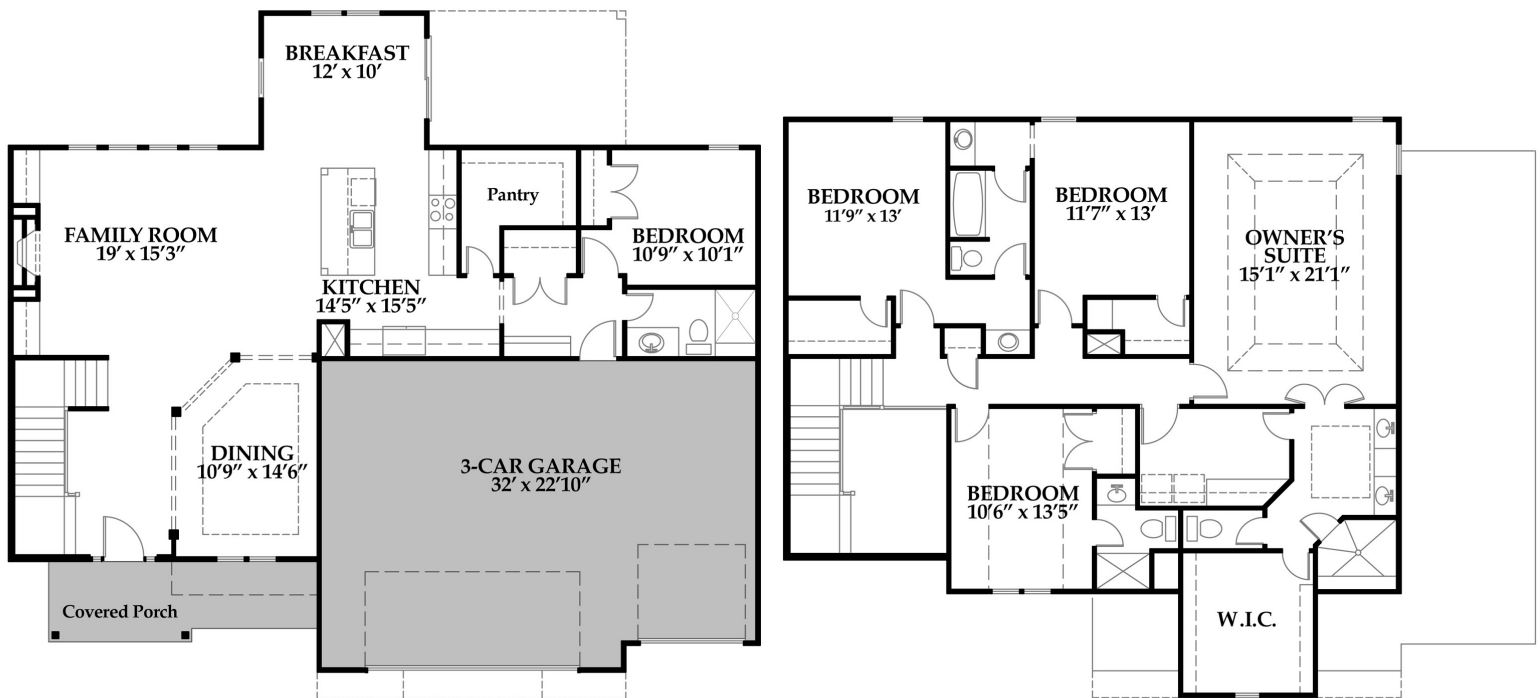




The  
**WINCHESTER**  
CRAFTSMAN

2 STORY  
5 BEDS  
3.5 BATHS  
2971 SQFT



[www.hearthsidekc.com](http://www.hearthsidekc.com)  
[info@hearthside-kc.com](mailto:info@hearthside-kc.com)

Follow The Fun:



**DESIGN CENTER**

1915 Industrial Dr  
Suite 300, Liberty,  
MO 64068

**(816) 781-0234**

*Homes may vary slightly from drawings shown.  
Room dimensions and sqftg is approximate.*

# **WINCHESTER**

## **PLAN FEATURES**

- Hardwood Throughout First Floor (Except 5th Bedroom)
- Fireplace With Double Mantle
- Built-In Cabinets Surrounding Fireplace
- Custom Window Trim In Family Room
- 2-Story Foyer
- 2-Story With 5th Bedroom On Main
- Granite Kitchen Countertops
- Kitchen Island With Furniture Legs
- Walk-In Pantry
- Covered Outdoor Space
- 3-Car Garage
- Finished Stairs To Basement
- 2nd Wall Paint Color
- Wainscoting In Dining Room & Staircase
- Stairs With Designer Carpet & Wood End Caps
- Crown Molding In Dining Room & Master Bedroom
- Double Shower Head In Master Shower
- Tile Wall & Floor In Master Shower
- Tile Walls At Tub/Shower In Secondary Baths
- Tile Floor In All Bathrooms & Laundry Room
- Granite Countertops In All Bathrooms
- Delta Woodhurst Bath Faucets
- Yard Irrigation
- \$3,000 Lighting Allowance
- \$1,750 Landscape Allowance

## **HEARTHSIDE HOMES**

We understand building a home can be a daunting process. You want to make sure the price point is right, the quality meets your expectations, and the entire process doesn't take forever! With Hearthside Homes, you'll have a team of passionate designers and construction professionals to lead the way. We place an emphasis on including you in on the entire project, by keeping you up-to-date on the complete schedule!

### **A Team Of Experts:**

- Specialty Field Supervisors
- In-House Design Professional
- Dedicated Warranty Manager
- 30+ Years of Experience

### **24/7 Online Access to YOUR:**

- Construction Schedule
- Change Orders
- Contract Documents
- Job Photo Library