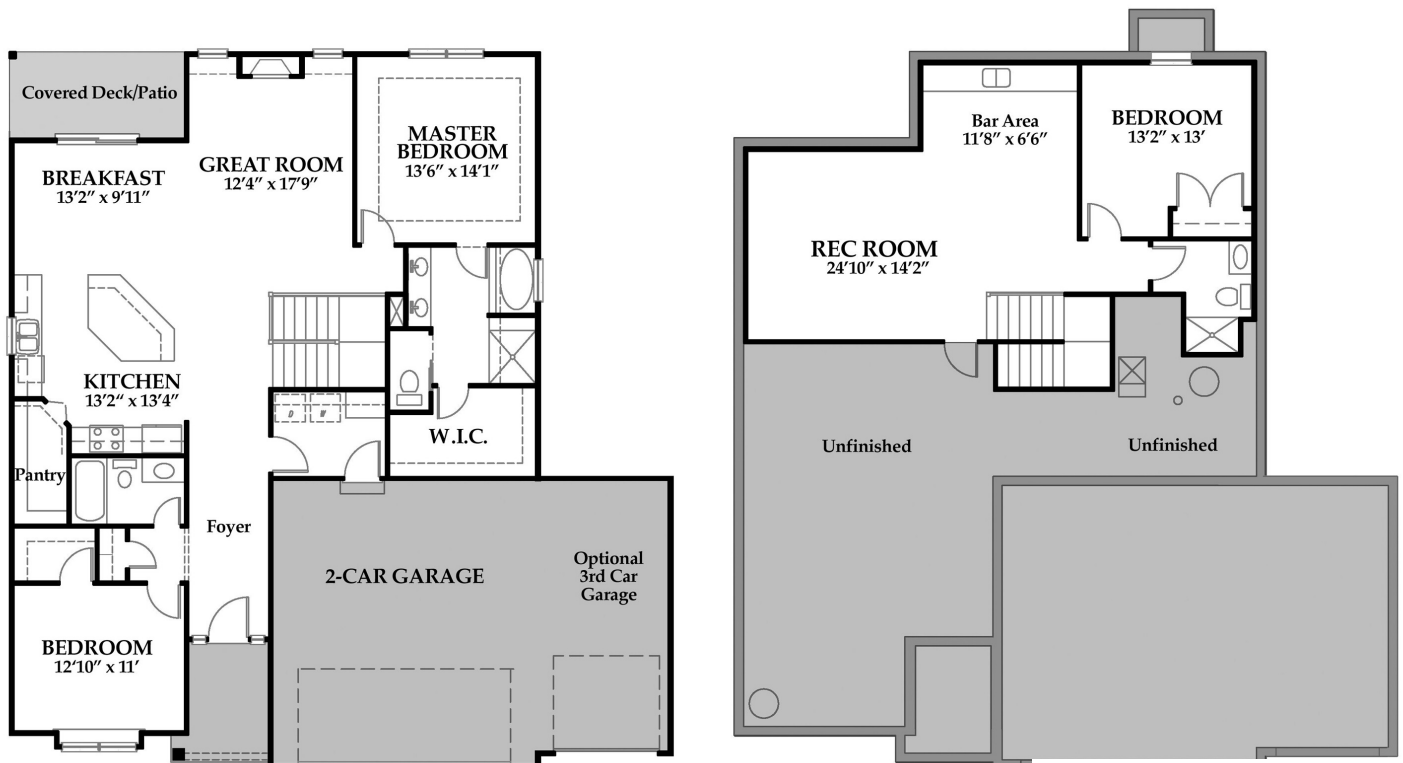




The
MONROE
GABLE ELEVATION

REVERSE
3 BEDS
3 BATHS
2230 SQFT



www.hearthsidekc.com
info@hearthside-kc.com

Follow The Fun:



DESIGN CENTER

1915 Industrial Dr
Suite 300, Liberty,
MO 64068

(816) 781-0234

*Homes may vary slightly from drawings shown.
Room dimensions and sqftg is approximate.*

MONROE

PLAN FEATURES

- Hardwood In Foyer, Kitchen, Breakfast & Great Room
- Open-Concept Floor Plan
- Covered Outdoor Space
- Granite Kitchen Countertops
- Walk-In Pantry
- Fireplace With Single Mantle & Built-In Cabinets
- Finished Stairs To Basement
- Jetted Built-In Master Bathtub
- Double Vanity In Master Bathroom
- Tile Wall In Master Shower
- Tile Floors In All Bathrooms & Laundry Room
- Crown Molding In Master Bedroom
- Standard 2-Car Garage
- \$1,850 Lighting Allowance
- \$1,000 Landscape Allowance

HEARTHSIDE HOMES

We understand building a home can be a daunting process. You want to make sure the price point is right, the quality meets your expectations, and the entire process doesn't take forever! With Hearthside Homes, you'll have a team of passionate designers and construction professionals to lead the way. We place an emphasis on including you in on the entire project, by keeping you up-to-date on the complete schedule!

A Team Of Experts:

- Specialty Field Supervisors
- In-House Design Professional
- Dedicated Warranty Manager
- 30+ Years of Experience

24/7 Online Access to YOUR:

- Construction Schedule
- Change Orders
- Contract Documents
- Job Photo Library