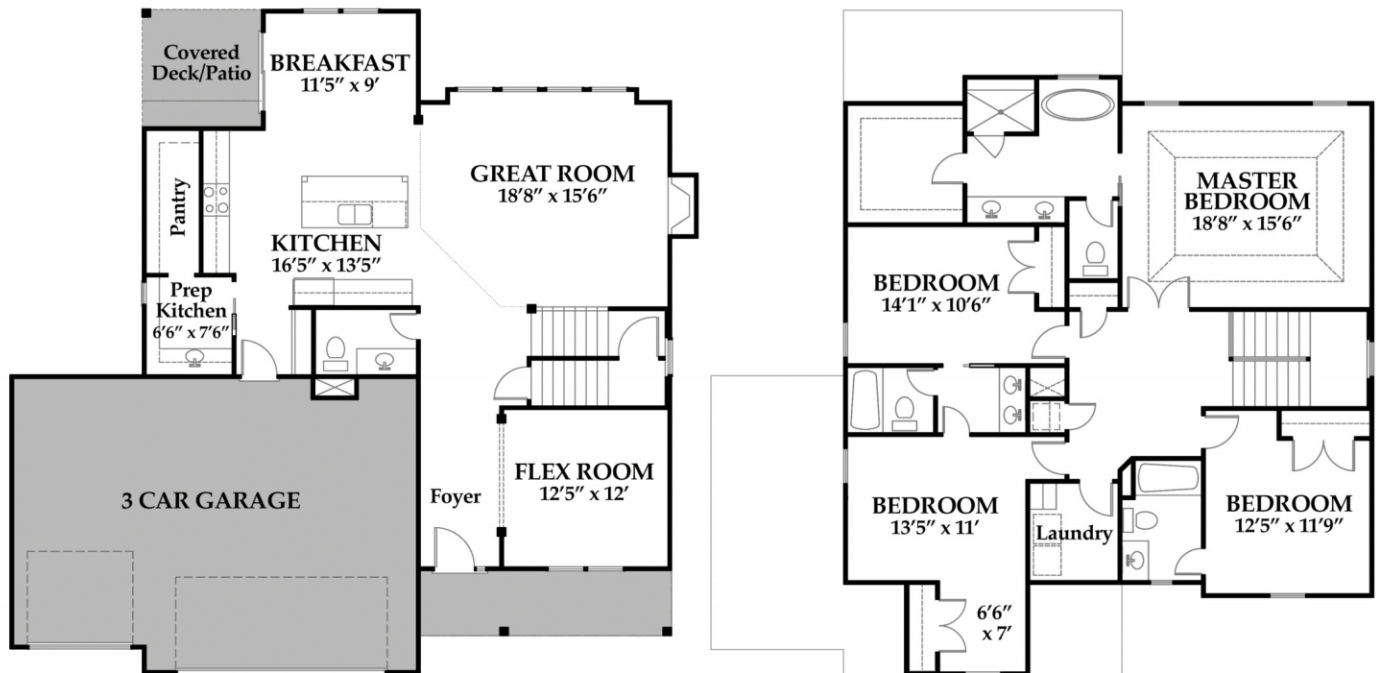




The MANCHESTER CRAFTSMAN

2 STORY
4 BEDS
3.5 BATHS
2695 SQFT



www.hearthsidekc.com
info@hearthside-kc.com

Follow The Fun:



DESIGN CENTER

1915 Industrial Dr
Suite 300, Liberty,
MO 64068

(816) 781-0234

*Homes may vary slightly from drawings shown.
Room dimensions and sqft is approximate.*

MANCHESTER

PLAN FEATURES

- Hardwood Throughout First Floor
- Granite Kitchen Countertops
- Kitchen Island With 3 Pendant Lights
- Furniture Legs At Island
- Range Hood
- Prep Kitchen With Sink
- Wainscoting In Flex Room
- Covered Outdoor Space
- 3-Car Garage With 8' Doors
- Fireplace With Double Mantle
- Custom Window Trim In Family Room
- 2nd Wall Paint Color
- Crown Molding In Flex Room & Foyer
- Crown Molding In Master Bedroom
- Freestanding Master Bathtub
- Frameless Master Shower Glass
- Tile Wall & Floor In Master Shower
- Tile Floor In All Bathrooms & Laundry Room
- Granite Countertops In All Bathrooms
- Delta Woodhurst Bath Faucets
- Stairs With Designer Carpet & Wood End Caps
- Finished Stairs To Basement (Mid Landing)
- Yard Irrigation
- \$3,600 Lighting Allowance
- \$1,750 Landscape Allowance

HEARTHSIDE HOMES

We understand building a home can be a daunting process. You want to make sure the price point is right, the quality meets your expectations, and the entire process doesn't take forever! With Hearthside Homes, you'll have a team of passionate designers and construction professionals to lead the way. We place an emphasis on including you in on the entire project, by keeping you up-to-date on the complete schedule!

A Team Of Experts:

- Specialty Field Supervisors
- In-House Design Professional
- Dedicated Warranty Manager
- 30+ Years of Experience

24/7 Online Access to YOUR:

- Construction Schedule
- Change Orders
- Contract Documents
- Job Photo Library