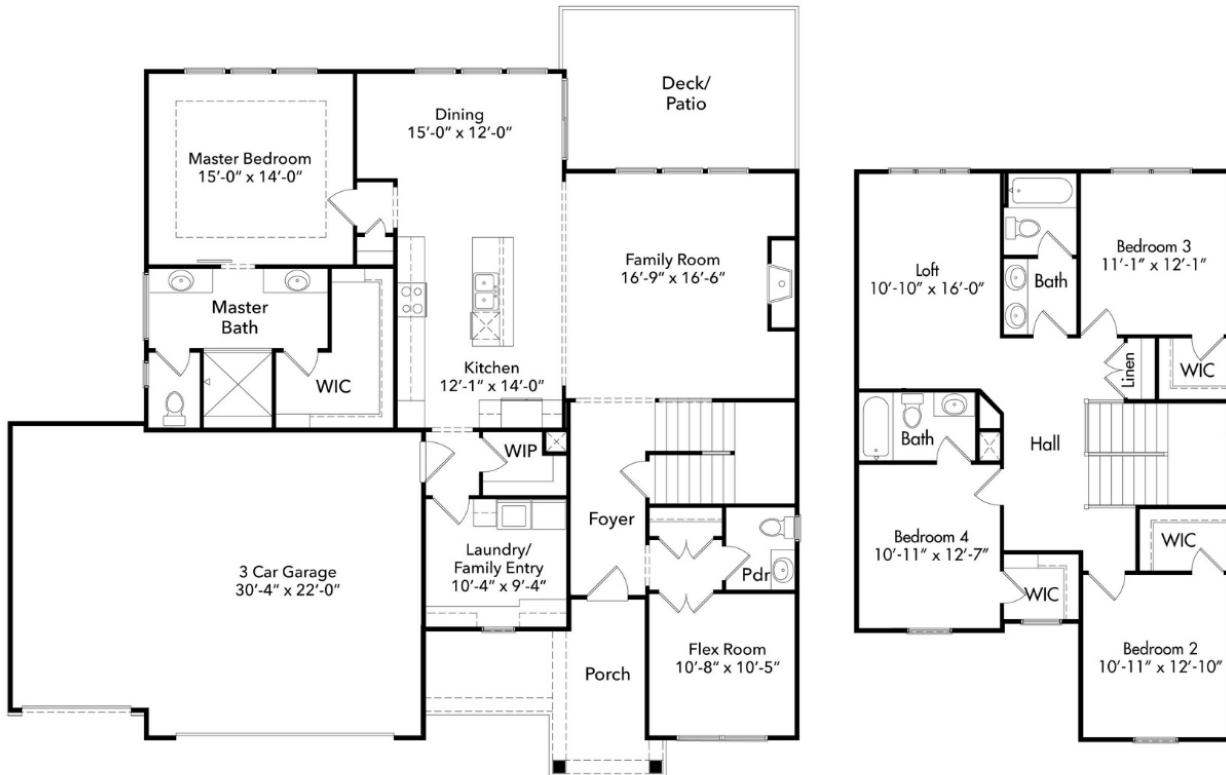




The  
**HAWTHORN II**  
FARMHOUSE

1.5 STORY  
4 BEDS  
3.5 BATHS  
2581 SQFT



[www.hearthsidekc.com](http://www.hearthsidekc.com)  
[info@hearthside-kc.com](mailto:info@hearthside-kc.com)

Follow The Fun:



**DESIGN CENTER**

1915 Industrial Dr  
Suite 300, Liberty,  
MO 64068

**(816) 781-0234**

*Homes may vary slightly from drawings shown.  
Room dimensions and sqftg is approximate.*

# HAWTHORN II

## PLAN FEATURES

- Hardwood In Foyer, Kitchen, Dining, Great Room, Flex Room & 1/2 Bath
- Fireplace With Wrap Panel To Ceiling
- Wine Station
- Flex Room With Double Glass Doors
- Granite Kitchen Countertops
- Kitchen Island With 3 Pendant Lights
- Furniture Legs At Island
- Range Hood
- 3-Car Garage With 8' Doors
- Upgraded Front Door
- Wainscoting In Foyer & Flex Room
- 2nd Wall Paint Color
- I-Joist Floor System
- Second Floor Loft
- Custom Window Trim In Family & Dining Room
- Stairs With Designer Carpet & Wood End Caps
- Crown Molding In Master Bedroom
- Double Shower Head In Master
- Frameless Master Shower Glass
- Granite Master Shower Seat
- Tile Wall & Floor In Master Shower
- Tile Floor In All Bathrooms & Laundry Room
- Granite Countertops In All Bathrooms
- Delta Woodhurst Bath Faucets
- Yard Irrigation
- \$2,500 Lighting Allowance
- \$1,750 Landscape Allowance

## HEARTHSIDE HOMES

We understand building a home can be a daunting process. You want to make sure the price point is right, the quality meets your expectations, and the entire process doesn't take forever! With Hearthside Homes, you'll have a team of passionate designers and construction professionals to lead the way. We place an emphasis on including you in on the entire project, by keeping you up-to-date on the complete schedule!

### A Team Of Experts:

- Specialty Field Supervisors
- In-House Design Professional
- Dedicated Warranty Manager
- 30+ Years of Experience

### 24/7 Online Access to YOUR:

- Construction Schedule
- Change Orders
- Contract Documents
- Job Photo Library

## OUR BRAND PARTNERS

